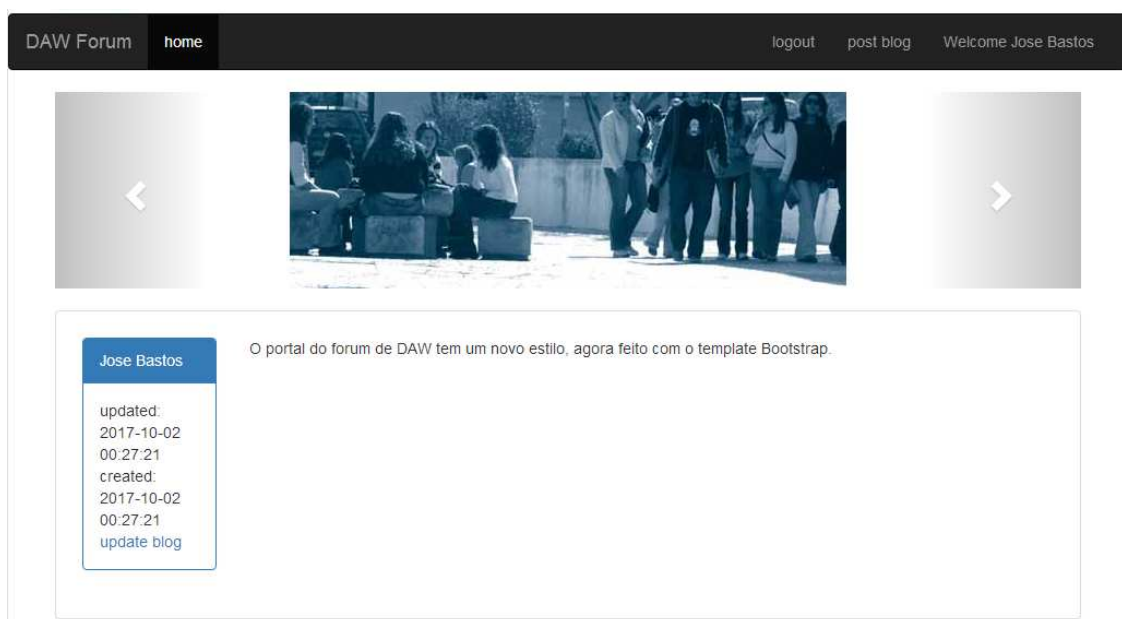


LAB 3 – Desenho de HTML templates utilizando o framework BOOTSTRAP

NOTA:

- Pode utilizar templates descarregados da Internet
- **NÃO** pode utilizar os templates descritos neste guião
- **NÃO** pode utilizar os templates de outro aluno!
- Neste lab seja tão criativo quanto possível!

1. Desenhe o template `index_template.html` utilizando o framework BOOTSTRAP (obrigatório)



Os *screenshots* apresentados são ilustrativos. Apenas é requerido que os templates tenham (no mínimo) os campos/placeholders que aí aparecem: {MENU_1} {MENU_2} {MENU_3} {MENU_4} {USER} {DATE UPDATED} {DATE CREATED} {POST}.

Utilize os “goodies” (navbar, carrossel, etc) que o framework Bootstrap oferece.



DAW Forum

{MENU_1}

{MENU_2}{MENU_3}

{WELCOME}

FCT



{USER}

updated: {UPDATED}

created: {CREATED}

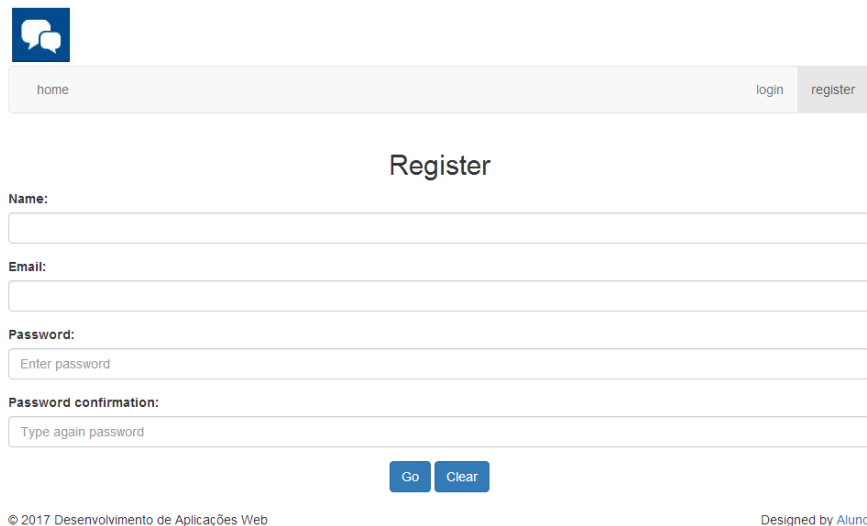
{UPDATE}

{MICROPOST}

© 2017 Desenvolvimento de Aplicações Web

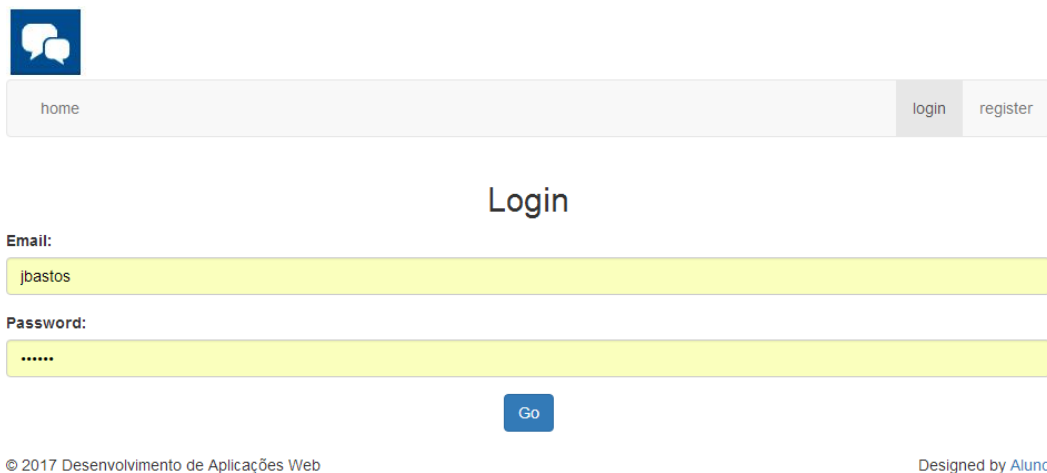
Designed by Aluno

2. Desenhe o template `register_template.html` utilizando o framework BOOTSTRAP (obrigatório)



The image shows a web form for registration. At the top left is a blue square icon with two white speech bubbles. Below it is a horizontal navigation bar with a light gray background. It contains the text 'home' on the left, and 'login' and 'register' on the right, with 'register' highlighted in a darker gray. The main heading 'Register' is centered. Below it are four input fields: 'Name:', 'Email:', 'Password:' (with placeholder 'Enter password'), and 'Password confirmation:' (with placeholder 'Type again password'). At the bottom are two blue buttons labeled 'Go' and 'Clear'. The footer contains the copyright notice '© 2017 Desenvolvimento de Aplicações Web' on the left and 'Designed by Aluno' on the right.

3. Desenhe o template `login_template.html` utilizando o framework BOOTSTRAP (obrigatório)



The image shows a web form for login. At the top left is a blue square icon with two white speech bubbles. Below it is a horizontal navigation bar with a light gray background. It contains the text 'home' on the left, and 'login' and 'register' on the right, with 'login' highlighted in a darker gray. The main heading 'Login' is centered. Below it are two input fields: 'Email:' (containing the text 'jbastos') and 'Password:' (containing six dots). At the bottom is a single blue button labeled 'Go'. The footer contains the copyright notice '© 2017 Desenvolvimento de Aplicações Web' on the left and 'Designed by Aluno' on the right.

4. Faça login como PuTTY no servidor de ssh "ssh.deei.fct.ualg.pt", ou no servidor daw com o IP "10.10.23.183", e crie a pasta "LAB3"

```
a12345@australia:~$ cd public_html
```

```
a999990@australia:~/public_html$ mkdir LAB3
```

Faça o upload dos templates (ver instruções em apêndice)

- index_template.html,
- register_template.html,
- login_template.html

para a pasta "LAB3" no seu site web pessoal

```
/users/a12345/public_html/LAB3
```

Referências:

- http://deei.fct.ualg.pt/sites/all/themes/at_ualg_deei/images/banners/foto4.jpg
- http://deei.fct.ualg.pt/sites/all/themes/at_ualg_deei/images/banners/foto5.jpg
- http://deei.fct.ualg.pt/sites/all/themes/at_ualg_deei/images/banners/foto7.jpg
- <http://www.layoutit.com/>
- <http://www.w3schools.com/bootstrap/default.asp>
- <http://getbootstrap.com/>

APÊNDICE:

INSTRUÇÕES PARA O UPLOAD DE PASTAS/FILES

Se o seu ambiente de desenvolvimento tem o sistema operativo Windows é recomendado que utilize para o upload a ultima versão do programa FileZilla

http://intranet.deei.fct.ualg.pt/software/clients/FileZilla_3.39.0_win32-setup.exe

Sempre que fizer o upload de uma pasta/ficheiro é essencial que confirme que confirme que a pasta/ficheiro vai ser criada com as permissões correctas,

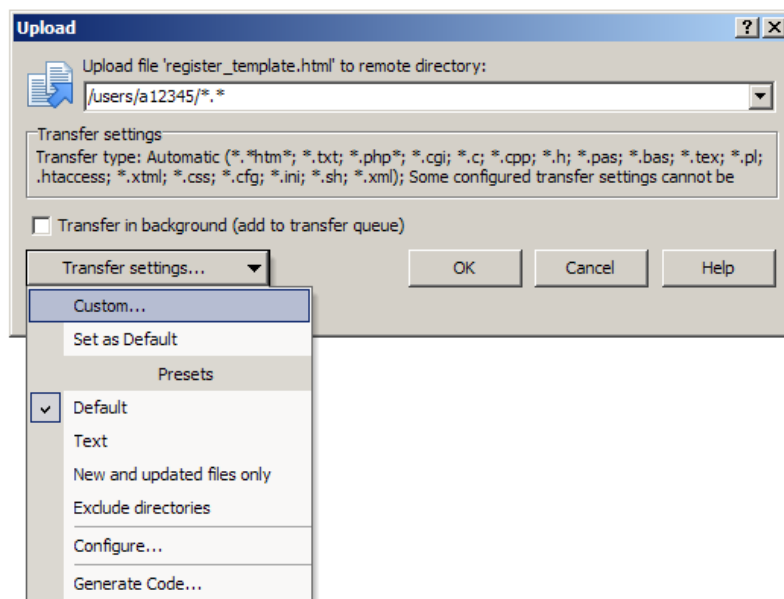
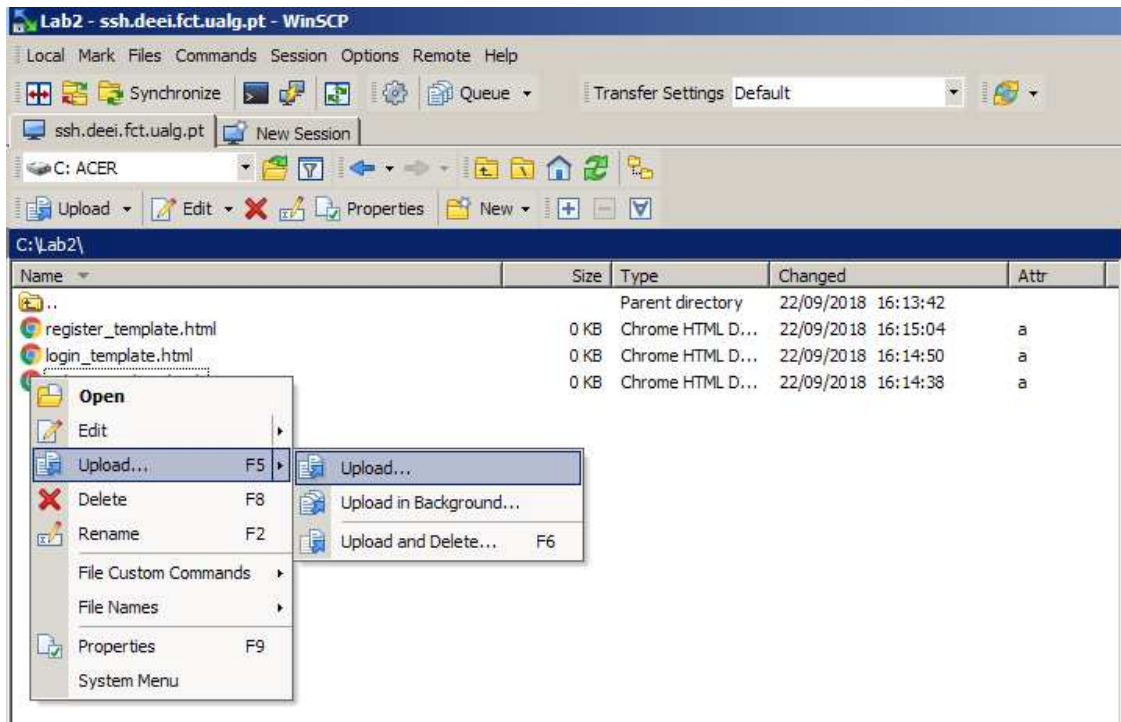
- pastas: octal 2750 (rwx r-s ---)
- ficheiros: octal 640 (rw- r-- ---)

Se preferir utilizar o programa WinSCP (5.13.4):

<http://intranet.deei.fct.ualg.pt/software/clients/WinSCP-5.13.4-Setup.exe>

é ESSENCIAL configurar as permissões como se mostra a seguir

Upload (F5) > Upload ...



Transfer settings

?

×

Transfer mode

☐ Text (plain text, html, scripts, ...)
 ☐ Binary (archives, doc, ...)
 ☒ Automatic

Transfer following files in text mode:

Filename modification

☒ No change
 ☐ Upper case
 ☐ Lower case
 ☐ Lower case 8.3
 ☒ Replace '\:*\?'\...

Upload options

☒ Set permissions:

☐ Owner
 ☒ R
 ☒ W
 ☐ X
 ☐ Set UID

☐ Group
 ☒ R
 ☐ W
 ☐ X
 ☒ Set GID

☐ Others
 ☐ R
 ☐ W
 ☐ X
 ☐ Sticky bit

☐ Octal:

☒ Add X to directories

Close

Common options

☒ Preserve timestamp
 ☐ Including directories

☐ Set total size

☐ Set read-only

Other

File mask:

Edit...

mask hints

☐ New and updated files only

OK

Cancel

Help